

**OFFICE**  
 at  
**PONDS AT LAFAYETTE, UNIT-1275**  
 4229 LAFAYETTE CENTER DRIVE  
 CHANTILLY, VIRGINIA

TRUE NORTH

REVISIONS	DATE	DESCRIPTION

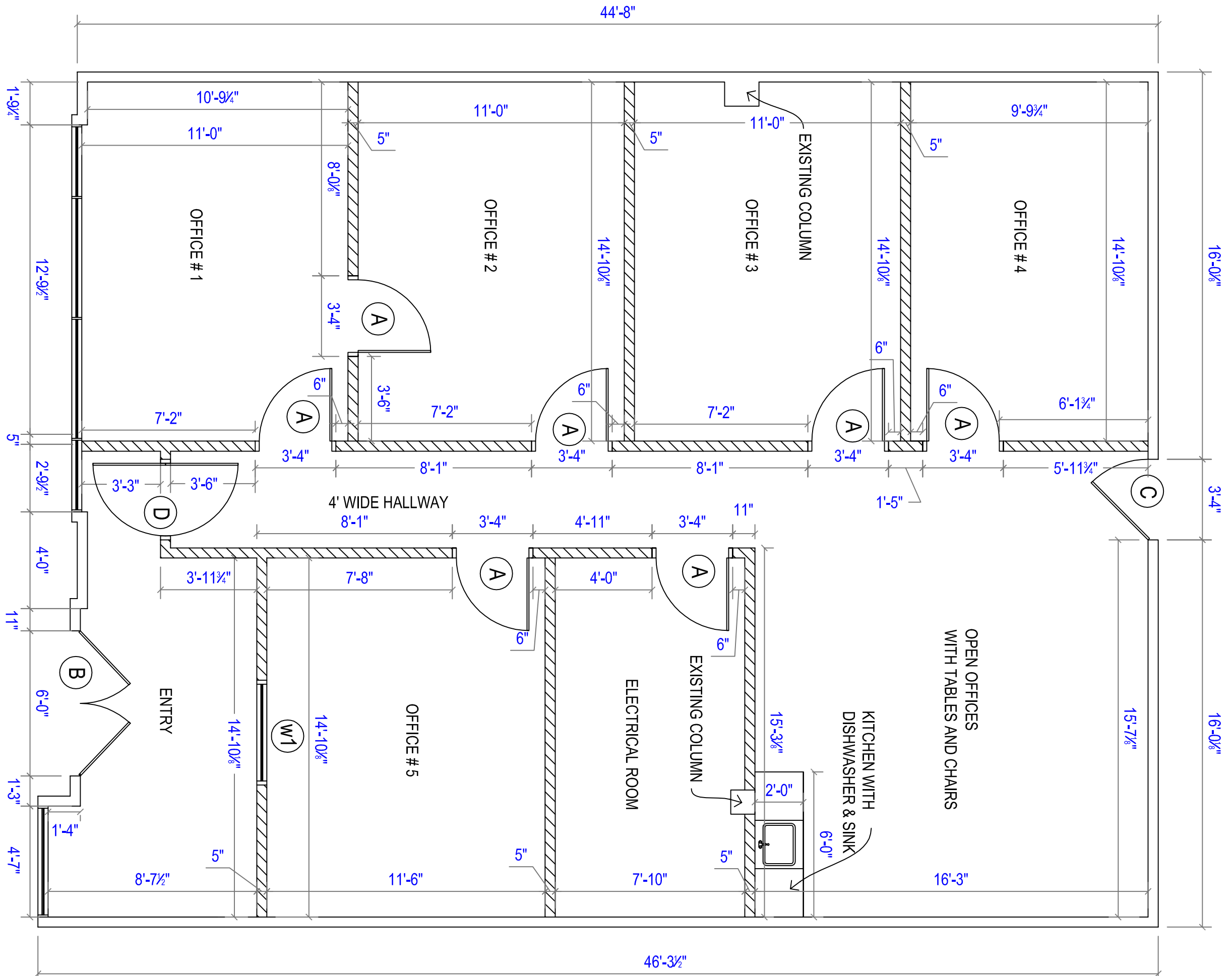
DRAWN: Rocharna  
 CHECKED: ABHY  
 DATE: 01/02/08  
 SCALE: AS SHOWN

SHEET: **A-1**

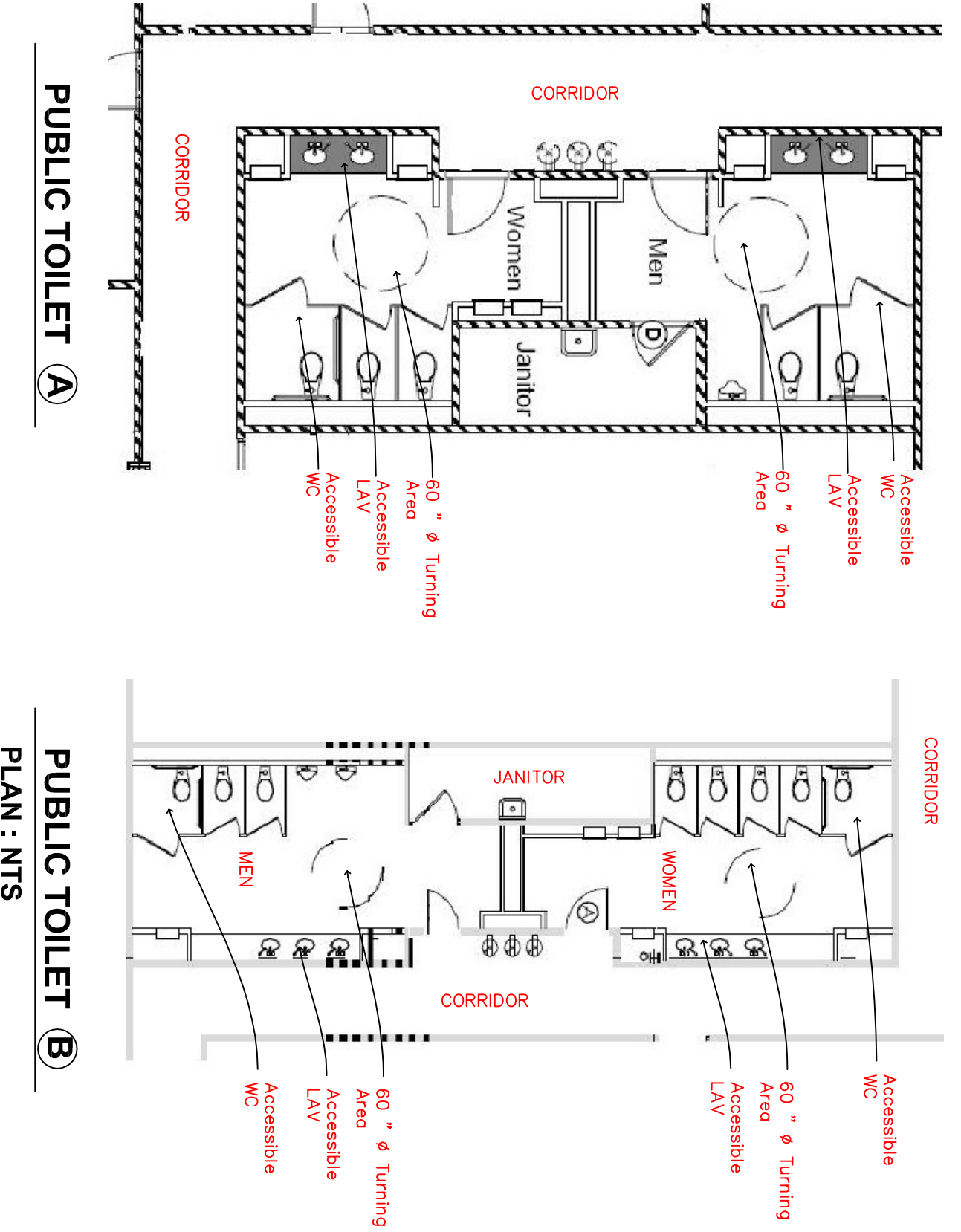
**DOOR AND WINDOW SCHEDULE**

MARK	WIDTH	HEIGHT	MATERIAL	FRAME	HARDWARE	REMARKS
A	3'	6'-8"	H.C.W	METAL	3 hinges passage lock	
B	6'	7'-0"	AL G	ALUMINUM	---	EXISTING
C	3'	7'-0"	METAL	METAL	---	EXISTING RATED DOOR
D	3'	4'-0"	H.C.W	METAL	Double acting 2 hinges	DUTCH DOOR
W1	4'	4'	GLASS	METAL	---	SLIDING GLASS WINDOW

NOTE : ALL DOORS AND FRAMES ARE TO BE PAINTED

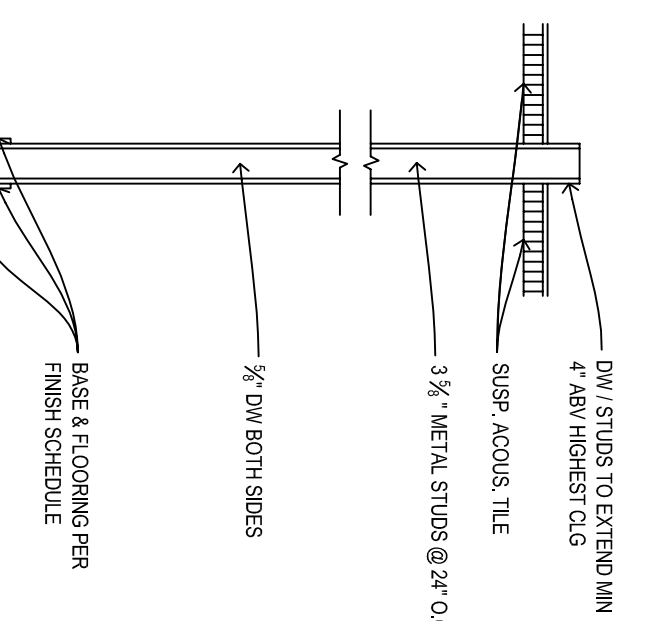


**PROPOSED FLOOR PLAN**  
 SCALE : 1/4" = 1'-0"

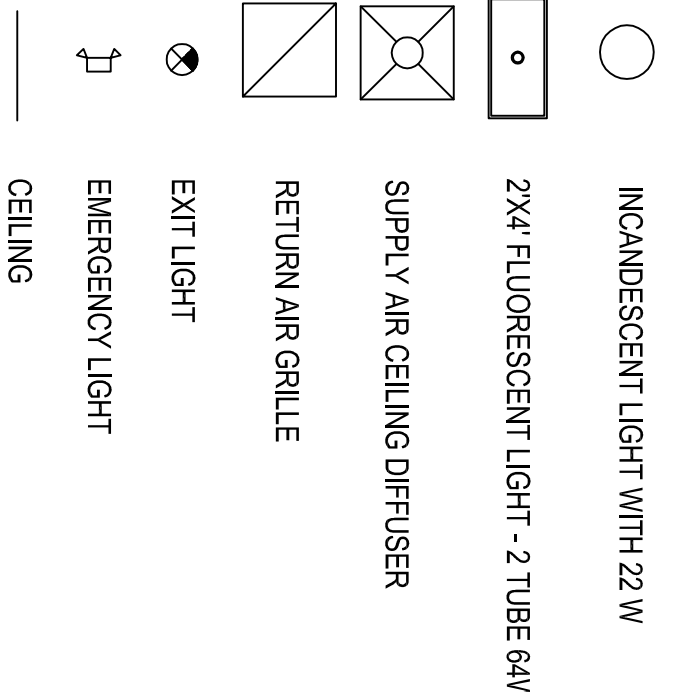


**KEY PLAN**

**PARTITION TYPE**



**LEGEND**



**REFLECTED CEILING PLAN**  
 SCALE : 1/4" = 1'-0"

